



MOSH/MOAH

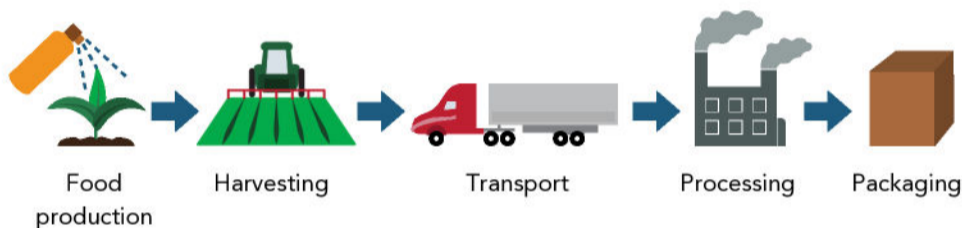
What are MOSH/MOAH?

Mineral oil hydrocarbons, comprising MOSH and MOAH, are compounds that accumulate in human tissues and may contain highly potent carcinogenic compounds, posing a risk to consumer health and safety.

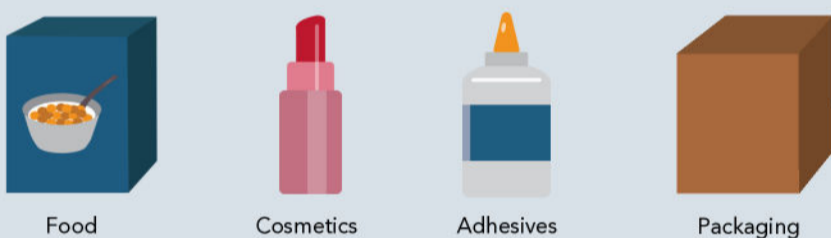
MOSH (Mineral Oil Saturated Hydrocarbons)	MOAH (Mineral Oil Aromatic Hydrocarbons)
<p>Linear and branched alkanes and cycloalkanes</p>	<p>Alkylated aromatics with 1-5 rings</p>
<p>Accumulates in fatty tissue and organs</p>	<p>Possibly Carcinogenic</p>

Contamination

MOSH/MOAH enter the product life cycle at various stages of production.

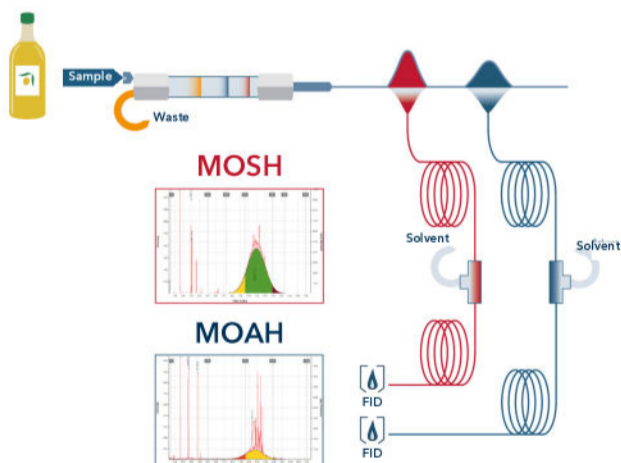


They can be found in these products:



Determination

To protect consumer health, scientists need to be able to extract and determine MOSH/MOAH accurately.



LC-GC-FID

Principle of MOSH/MOAH determination by LC-GC-FID. Normal phase LC separation of MOSH and MOAH and subsequent parallel GC-FID analysis.

Solutions

Discover how to automate your MOSH/MOAH workflow with GERSTEL's sample preparation and data analysis solutions.

Saponification & Epoxidation	AlOx Clean-Up & MOSH/MOAH Determination	Data Evaluation
<p>Off-line WorkStation</p>	<p>On-line LC-GC-FID System</p>	<p>ChroMOH Data Analysis Software</p>

For more information:

<https://www.gerstel.com/mosh-moah/>