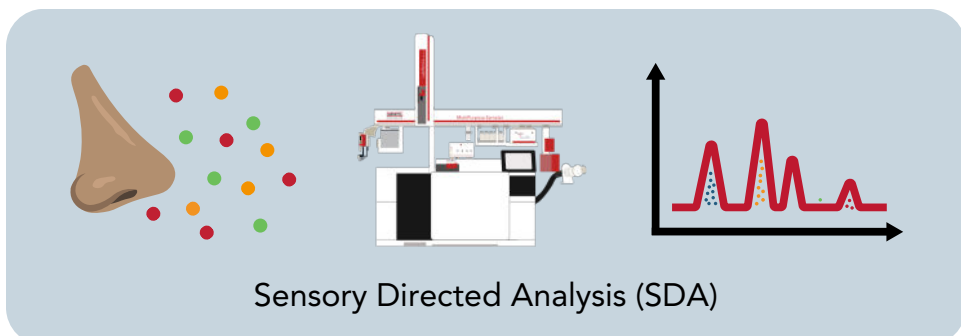


Sensory Directed Analysis (SDA)



What is SDA?

Sensory Directed Analysis (SDA) is the process which utilizes the separation power of gas chromatography in combination with olfaction and mass spectrometry (MS) to identify sensory-active compounds.



Workflow

The SDA workflow begins, typically in a sensory panel setting, with assessing and describing aromas or off-odors of a product. The subsequent analytical workflow, guided by the olfactory & MS data, allows scientists to make decisions, determine the next steps, and ultimately reach a positive compound identification.



Benefits

- Definitive sensory-active compound identification
- Flexibility to choose the extraction technique
- Olfactory detection of compounds present below instrument detection limits
- Advanced multidimensional separation
- Compound trapping for difficult-to-solve problems

Key Applications

SDA is designed for chemists & scientists who need to:

- Determine sensory-active compounds in products
- Map out aroma profiles
- Develop odor abatement technology
- Assure brand quality, consistency, and more

Solutions

SDA requires the use of an ODP and MS for sensory-active compound identification. GERSTEL's modular system design gives you the flexibility to choose the appropriate system based on your needs.

