

**GERSTEL**

MAKING LABS WORK



**FREE-STYLE™**

## Automated Solid Phase Extraction (SPE)

*Reliability, Flexibility, Advanced Features*

**FREESTYLE-SYSTEM**

# FREESTYLE for SPE Automation

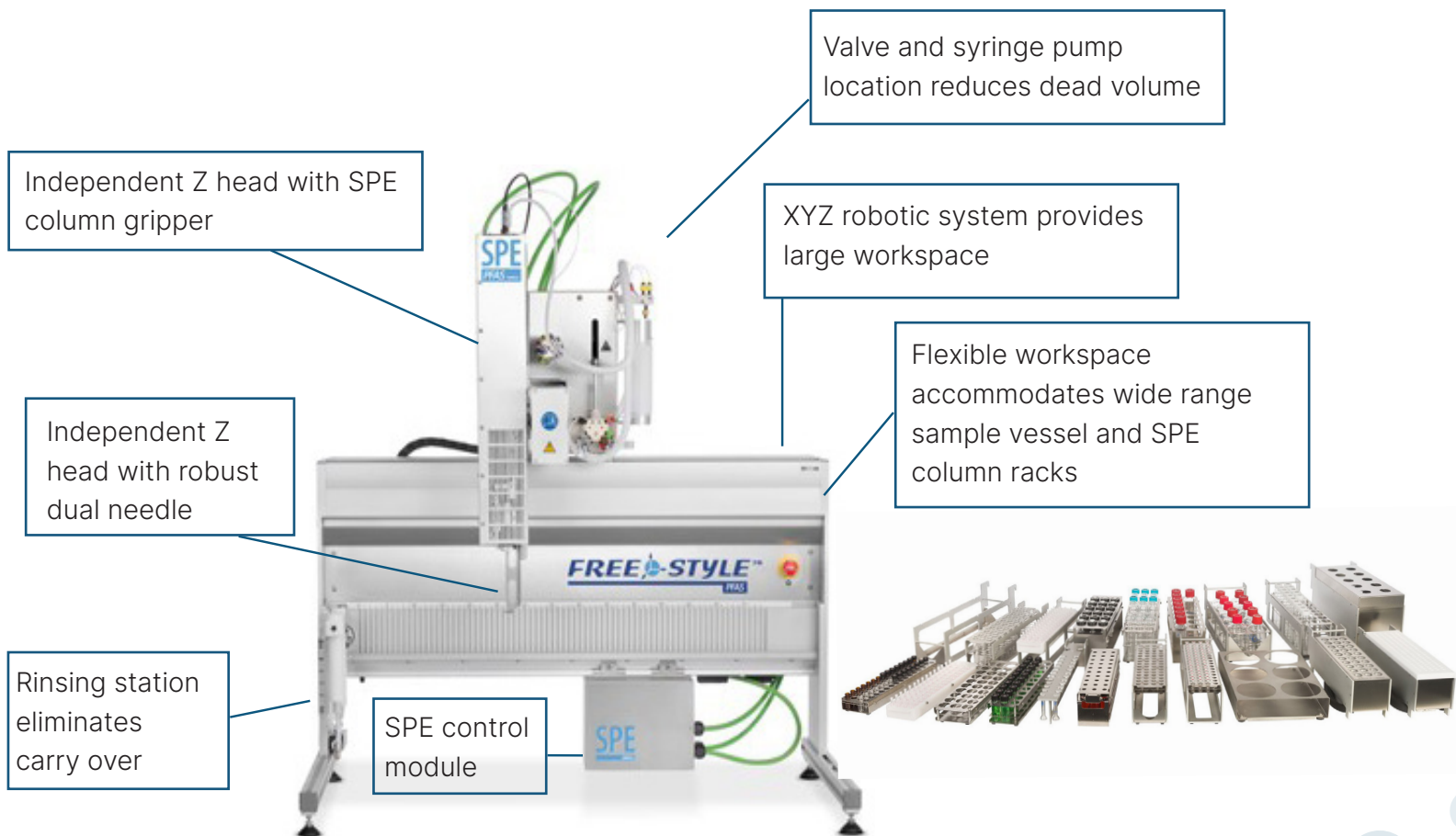
---

For analysts that need to automate their manual SPE methods without making compromises and require method flexibility, accurate results and no down time, the FREESTYLE is the most reliable and flexible automation platform available. Unlike other platforms that restrict column type, sample volume and have limited sample throughput, the FREESTYLE platform provides almost unlimited SPE automation capability. FREESTYLE's modular approach to upgrading allows you to "Future Proof" your investment while receiving lifetime support.

## Key FREESTYLE Features

- XYZ based robotic system for maximum workspace flexibility
- Main valves and syringe pump mounted on robot y-axis to reduce dead volume
- Rugged dual needle design provides maximum robustness allowing for 24/7 operation
- Accommodates all standard, immunoaffinity and glass SPE columns
- Over 40 sample vessel and SPE column racks – easy to move or exchange with no teaching
- Positive pressure elution up to 4 bar – handles viscous and dirty matrix samples
- Wide flow rate range (0.1 to 30 mL/min)
- Large sample size – up to 10 liters
- "Non-Stop" feature provides uninterrupted processing in case of column clogging
- Direct injection of processed sample into LC-MS
- Modular design for easy addition of other capabilities
- Up to 15 solvent capacity
- Advanced automated sample evaporation to user defined set volume
- Clean blanks and no carry over
- Advanced software for easy transfer of manual methods and system control

# FREESTYLE Main Hardware Components

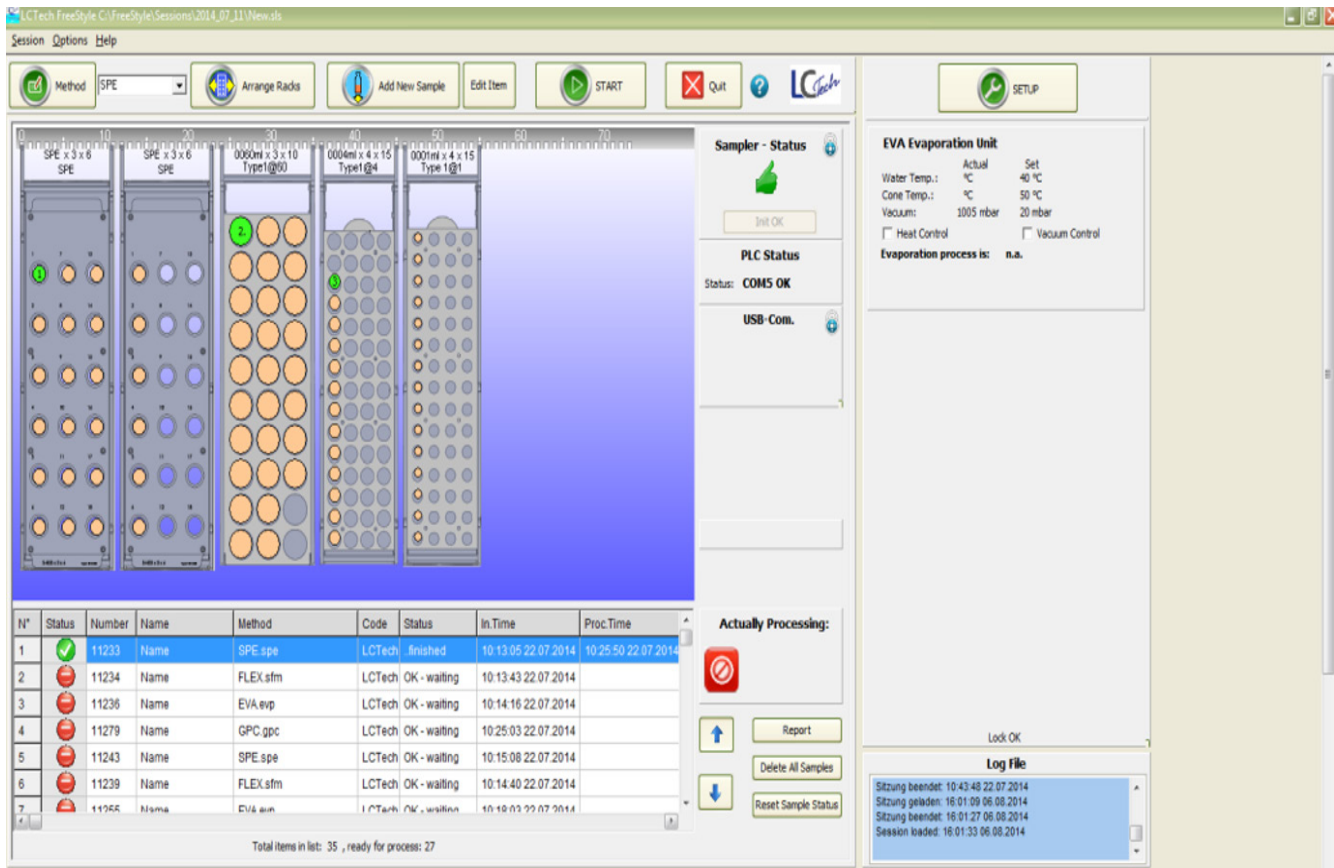


## Future Proof Your Investment

### – *Many Upgrade Options*

- EVAporation station – provides automatic sample evaporation using heating with either vacuum or nitrogen blow down to user defined final volume
- GPC module – adds automation of gel permeation chromatography methods
- HPLC injection module - allows direct injection into LC-MS system of processed sample
- ThermELUTE module – Unique system for the determination of mycotoxins using SMART immunoaffinity columns
- D-EVA – offline evaporation of 26 samples to user defined final volume

# FREESTYLE Software



- Controls all FREESTYLE functions and modules
- Easy to use, intuitive graphical user interface
- Simple and fast transfer of manual method parameters
- “Non-Stop” protocol ensures uninterrupted operation

GERSTEL, Inc. is the US distributor for LCTech

## GERSTEL, Inc.

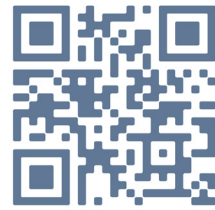
701 Digital Drive, Suite J  
 Linthicum, MD 21090  
 USA  
 +1 410-247-5885  
 sales@gerstelus.com  
 www.gerstelus.com



Visit our website

## LCTech GmbH

Daimlerstr. 4  
 84419 Obertaufkirchen,  
 Germany  
 Tel. +49 8082 2717-0  
 info@LCTech.de  
 www.LCTech.de



Visit our website